



INDIAN SCHOOL MUSCAT
SECOND SUMMATIVE ASSESSMENT 2016 - 2017
SCIENCE

STD: VII
Date: 14.03.17

MAX MARKS: 60
TIME: 2 HOURS

NOTE: ALL QUESTIONS TO BE ANSWERED IN SEPARATE ANSWER SHEETS.

QUESTIONS 1 TO 4 CARRY 5 MARKS EACH.
QUESTIONS 5 TO 13 CARRY 1 MARK EACH.
QUESTIONS 14 TO 22 CARRY 2 MARKS EACH.
QUESTIONS 23 TO 25 CARRY 3 MARKS EACH.
QUESTION 26 CARRIES 4 MARKS.

Q1. FILL IN THE BLANKS:-

- a) The speed of a vehicle is measured by -----
- b) Hydra has outgrowths called ----- to ingest food.
- c) The band of colours produced when white light passes through a glass prism is called a-----.
- d) The ----- Camel gives the best quality wool.
- e) An instrument used to hear our heart beat is called -----.

Q2. CHOOSE THE CORRECT ANSWER:-

- a). The largest part of the ruminant's stomach is
i) Abomasum ii) Omasum iii) Rumen iv) Reticulum
- b) Which one of these is not a unit of time?
i) Month ii) Metre iii) Hour iv) Year
- c). Which of these reproduces by stem?
i) Oxalis ii) Chrysanthemum iii) Potato iv) All of these
- d). Acetic acid is found in
i) Curd ii) Spinach iii) Apple iv) Vinegar
- e). The fibre produced from Angora goat is
i) Cashmere ii) Merino iii) Mohair iv) Kosa

Q3. STATE TRUE OR FALSE:-

- a). Shadows are formed as a result of rectilinear propagation of light.
- b). Xylem carries the prepared food to all parts of the plant.
- c). Bar graph and pie charts are commonly used to represent motion.
- d). Water is neither acidic nor basic.
- e). The filament secreted by silk worms is made up of glucose.

Q4. NAME THE FOLLOWING:-

- a). A digestive juice that acts only on fats
- b). Time taken to complete one oscillation.
- c). The scientific term for the bud used in the grafting method
- d). Bases that are soluble in water.
- e). The process by which seeds are scattered from the parent plant.

Q5. What is peristaltic movement? Write its use.

Q6. What type of mirror is used by Dentists for examination? Why?

Q7. What is a lens? What type of lens is a magnifying glass?

Q8. Name any two wastes excreted by plants.

Q9. Name two types of clocks that were used in ancient times.

Q10. Define the term fertilisation.

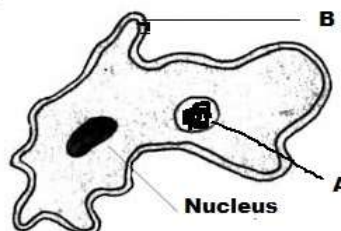
Q11. What is the chemical name of baking soda?

Q12. Three solutions **A**, **B** and **C** have the pH 3, 7 and 11 respectively.

Which one of these will turn phenolphthalein indicator pink? Why?

Q13. What is scouring?

Q14. Observe the diagram of Amoeba and answer the following questions



a) Name the parts marked **A** and **B**

b) Write the functions of the parts marked **B**

Q15. State any four characteristics of image formed by a plane mirror.

Q16. Write any two differences between Arteries and Veins.

Q17. A train, travelling at uniform speed takes 180 minutes to cover a distance of 270 Km. Calculate its speed in Km/h.

Q18.a) When is a body said to be in uniform motion?

- b) Two pendulums '**A**' and '**B**' each have a length of 60cm. The bob of pendulum '**A**' weighs 20gm and that of '**B**' weighs 25gm. Which pendulum will have a greater time period? Give a reason to support your answer.

Q19. a) What is sericulture?

b) Differentiate between Shearing and reeling

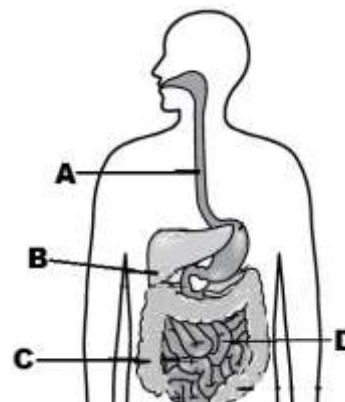
Q20. What is neutralisation reaction? Write a word equation for a neutralization reaction.

Q21. Give reason for the following: -

- a) Vinegar is commonly used in bottled food such as pickles and ketchups.
- b) Slaked lime is added to factory waste before it is discharged into rivers.

- Q22. a) State any two advantages of vegetative reproduction.
b).Name the male and female parts of a flower.

- Q23. Observe the diagram and answer the following questions.
a) Label the parts marked as **A** and **B**



- b) Write the main functions of the part marked **C**
c) Name the finger like projections found in part **D**? How does it make absorption more efficient?

- Q24.a) Write one difference between self-pollination and cross pollination.
b) State any two features of wind pollinated flowers.
c) What happens to the ovary and ovules after fertilization in flowering plants?

- Q25. a) Name the type of mirrors that can be used for heating water using solar energy.
b) Write any two differences between real and virtual image.

- Q26.Study the given diagram and answer the questions.

- a) Label the parts marked **B** and **D**
b) Name the part that filters blood in **A**
c) State the function of the part marked **C**
d) What is dialysis?
e) Name any two other excretory organs in the human body.

